



Neue Entwicklungen in RDA zur Verbesserung der Datenpraxis

Peter Wittenburg

Max Planck Computing and Data Facility

research data sharing without barriers

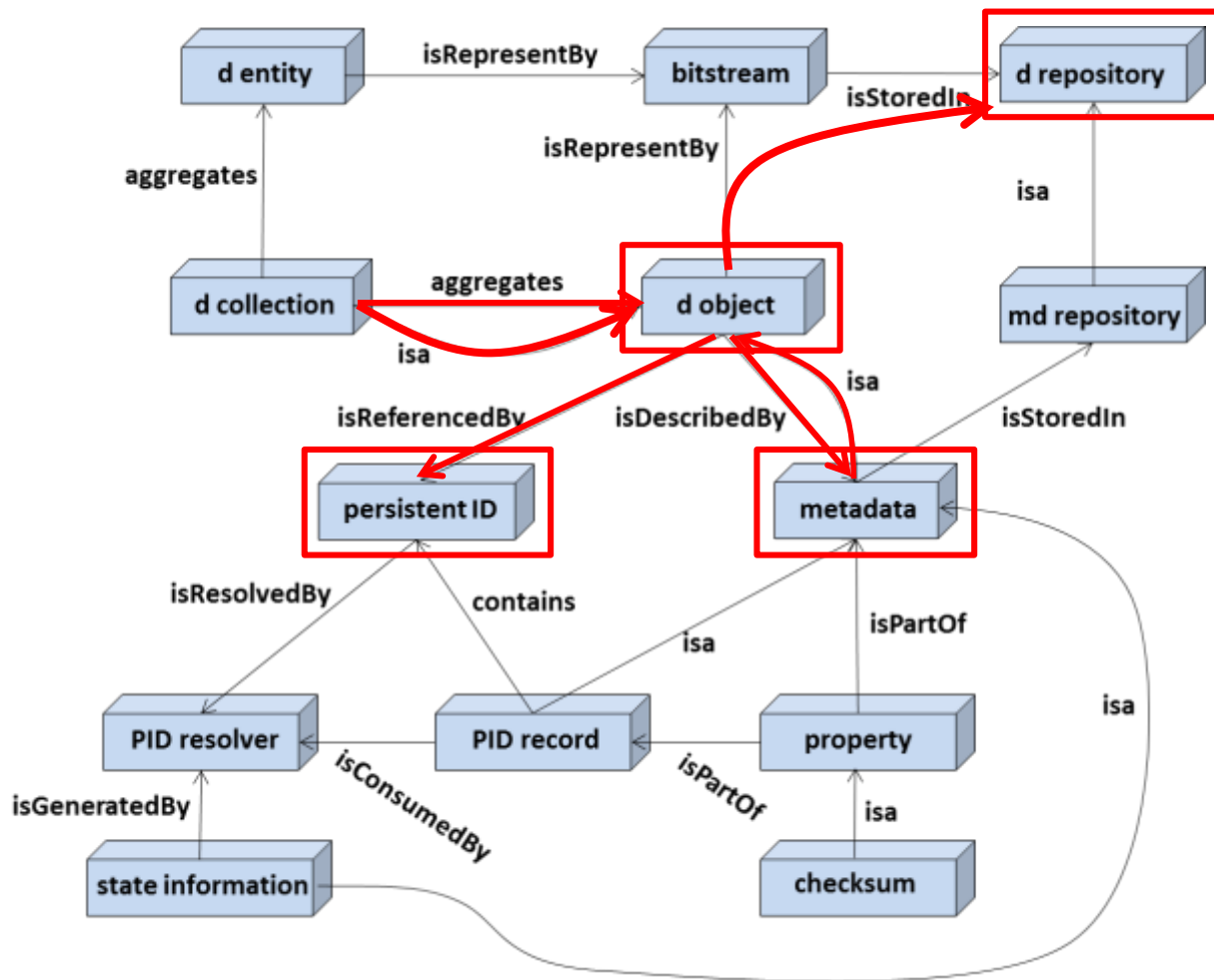
rd-alliance.org

... not at the end of the development



75%-80% of Data Scientist time for DM&A
~ 50 Billions of devices creating a Data Monster!
Are we ready to fight the monster – NO

RDA DFT – Simple powerful data model



DFT core model is simple.

Messages are on purpose very simple.

Need to learn to speak with one voice.

If all SW builders would adhere to it, we would have gained a lot!

To be Findable:

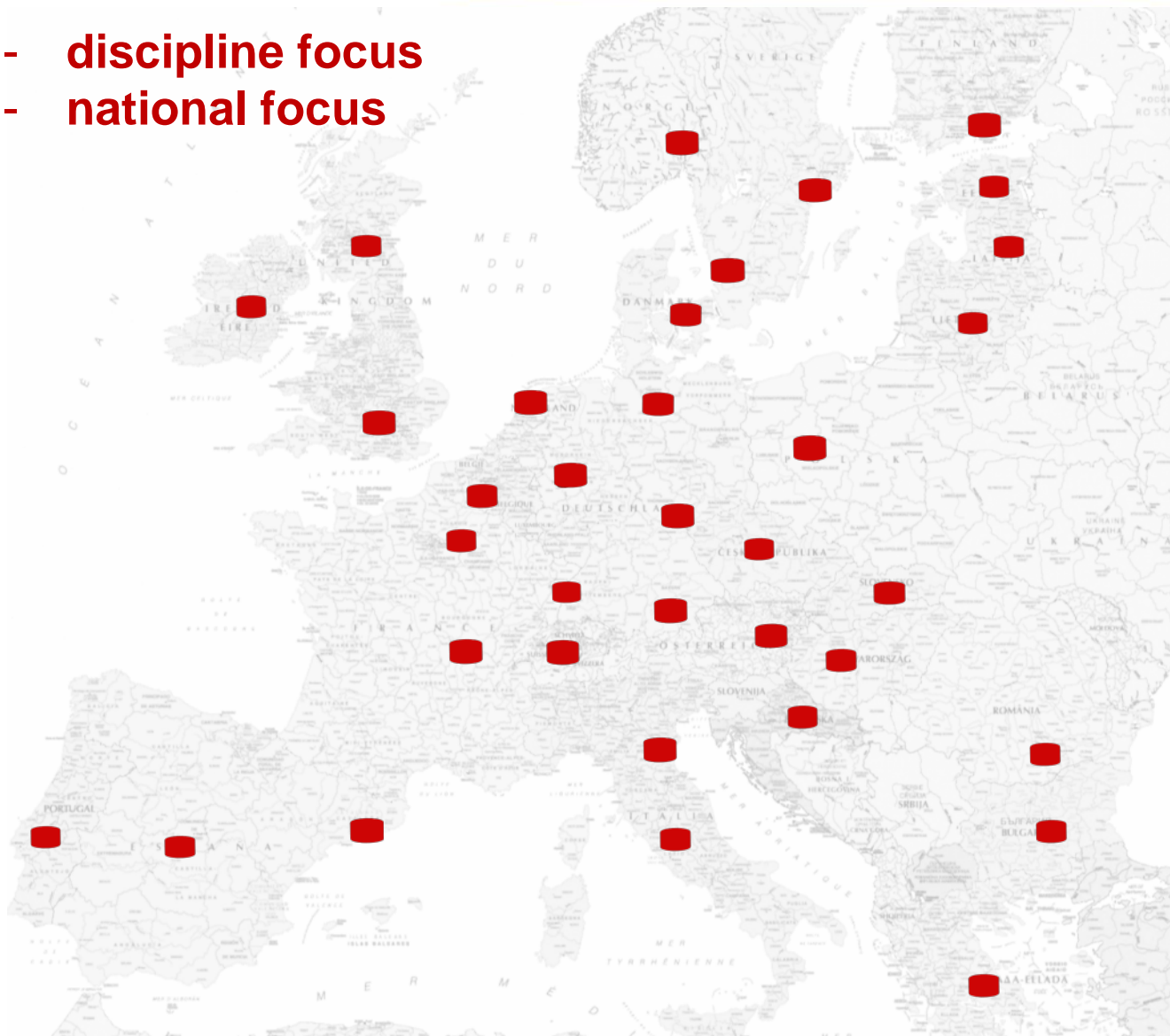
- F1. (meta)data are assigned a globally unique and eternally persistent identifier.
- F2. data are described with rich metadata.
- F3. (meta)data are registered or indexed in a searchable resource.
- F4. metadata specify the data identifier.

To be Accessible:

- A1 (meta)data are retrievable by their identifier using a standardized communications protocol.
 - A1.1 the protocol is open, free, and universally implementable.
 - A1.2 the protocol allows for an authentication and authorization procedure, where necessary.
- A2 metadata are accessible, even when the data are no longer available.

Federations of Trustful Repositories

- discipline focus
- national focus

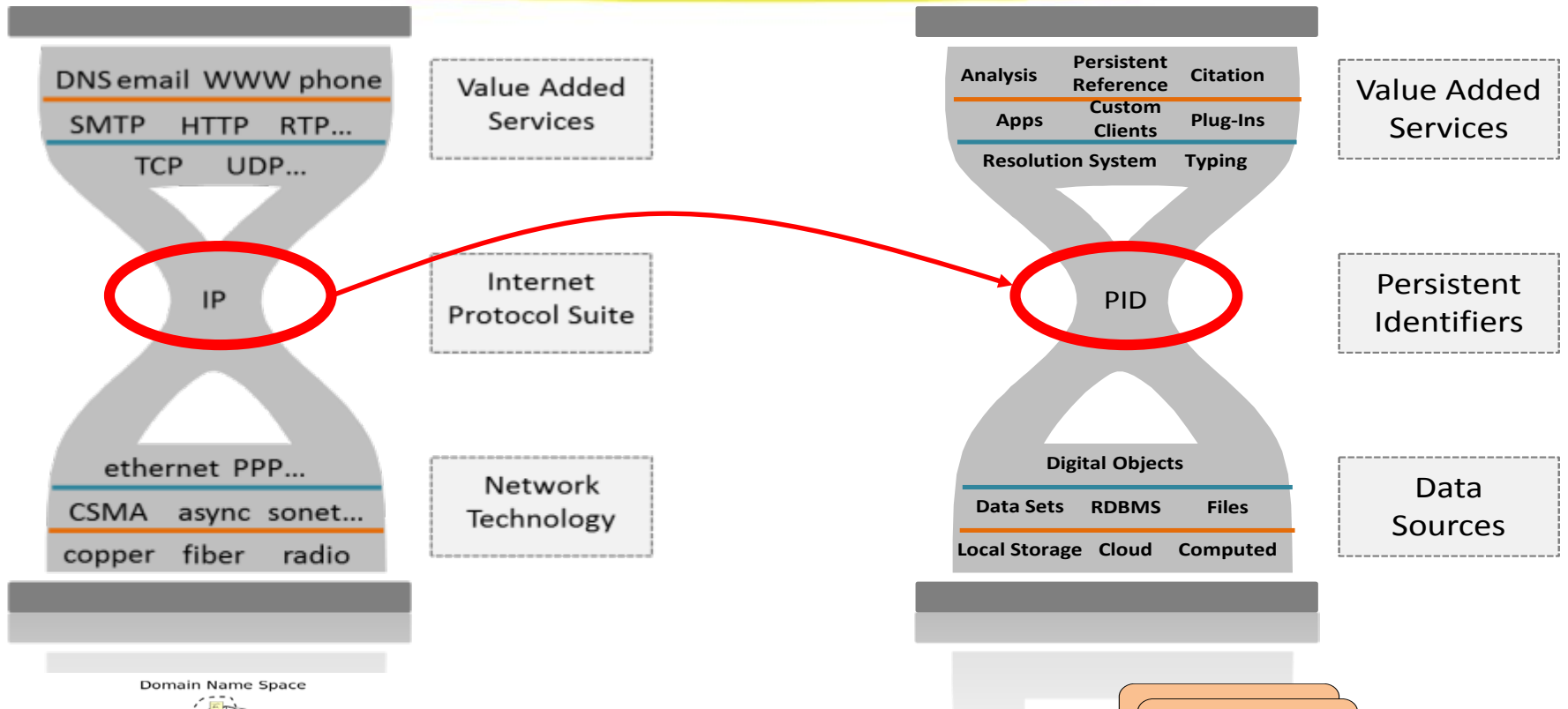


Social contracts to enable integration, seamless access and built on **trust**

at the core trustful centres being assessed by Data Seal of Approval / World Data Systems



PIDs to initiate Momentum



PID System is just a catalyser for new layered services and new businesses. Need to change – need a momentum.

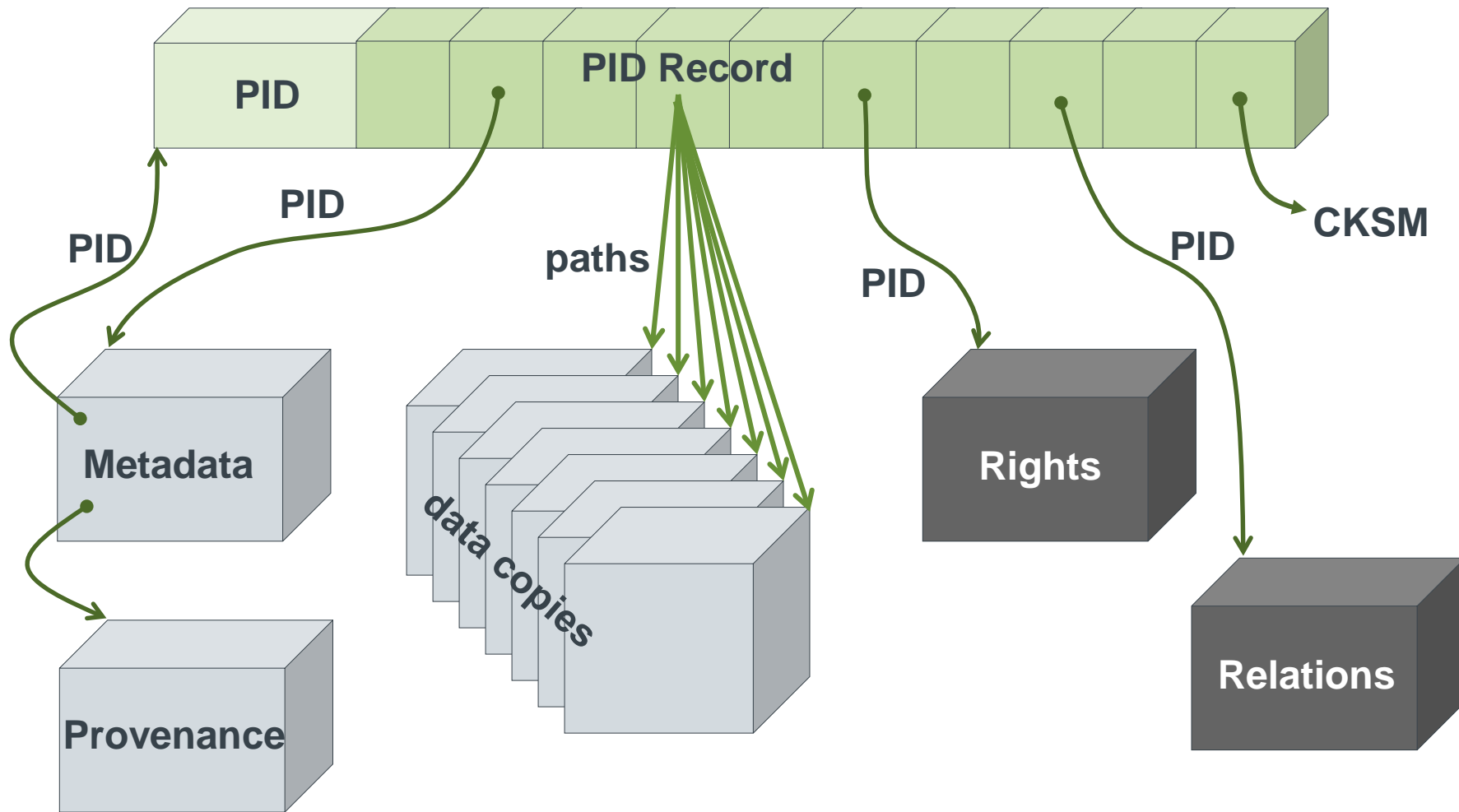


point to each other

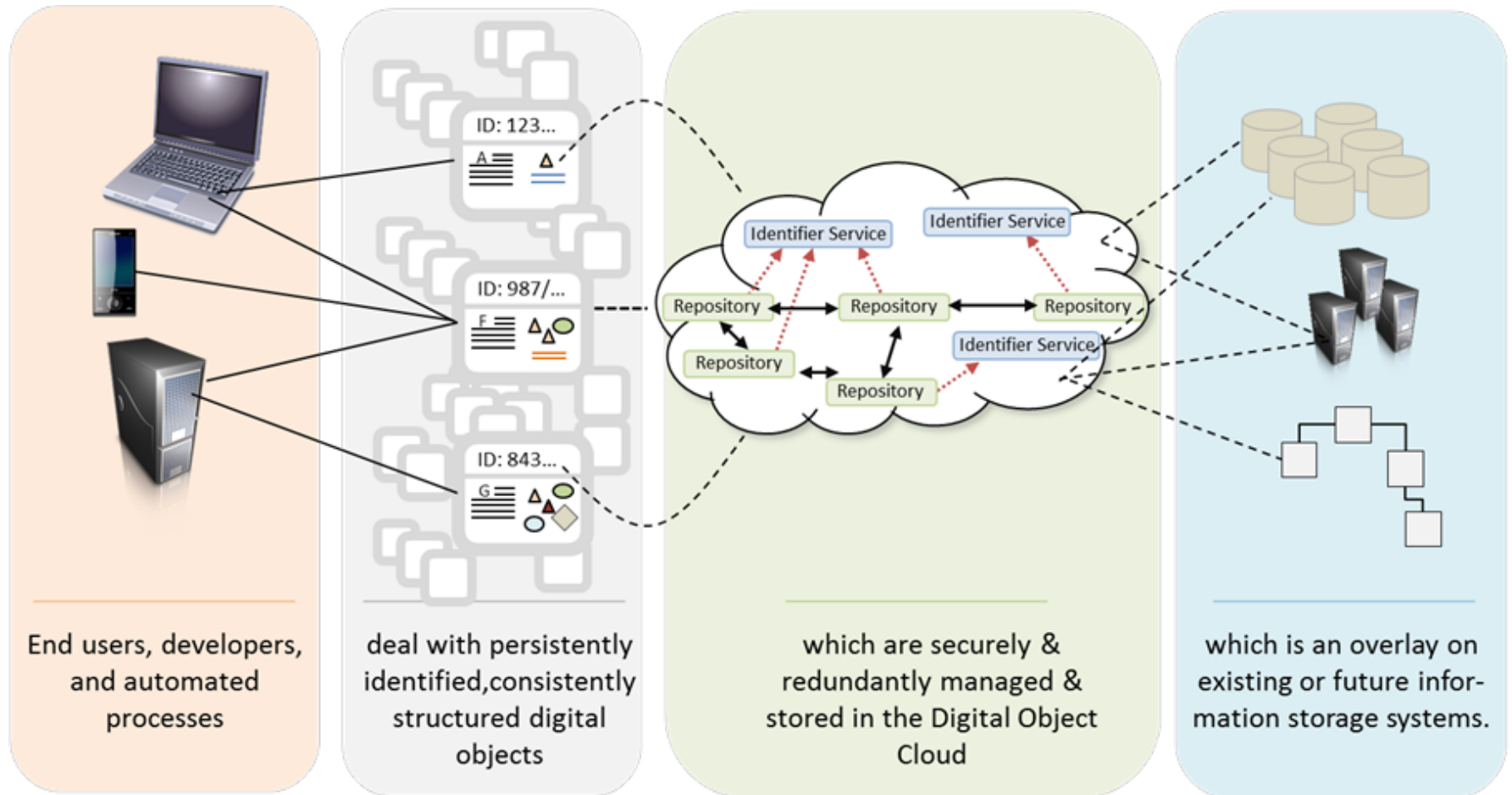
metadata attributes



PIDs as Binding Anchor



Towards a Global Digital Object Cloud



- wenn wir meinen, dass dies der Weg ist, dann ...
- es wird immer Ausnahmen geben wie auch bei der Computer Vernetzung
 - high performance Anwendungen
 - gewachsene Lösungen zur Identifikation von Konzepten etc.
 - interne IDs in Datenbanken
- aber es ist nunmehr Zeit, um systematisch Lösungen zu etablieren
 - hoch redundantes PID Referenz System für jeden und für alles
 - Typ Registraturen um Interpretationen/Aktionen anzugeben
 - Metadaten-Schema und MD-Konzept-Registraturen
 - Rechte-Registraturen
 - etc.

Weltweites Handle System als Kandidat

Dies ist keine RDA Recommendation.



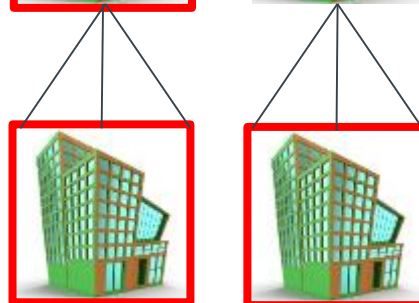
Independent Swiss Foundation



DONA Board of International Experts

Redundant network of root nodes

Contracts



- industry: need of a global identification solution
- China: towards a national identification solution

- <https://www.rd-alliance.org/groups/gede-group-european-data-experts-rda>
- dringender Klärungsbedarf:
 - Granularity & Collection Building
 - welche Attribute im PID Record (state information)
 - wie Versionierung
 - Binding Rolle der PIDs
 - wann Assoziierung von PIDs
 - was bei semantischen Kategorien
 - etc?
- Session in Barcelona!!!



Alles klar oder Fragen?